

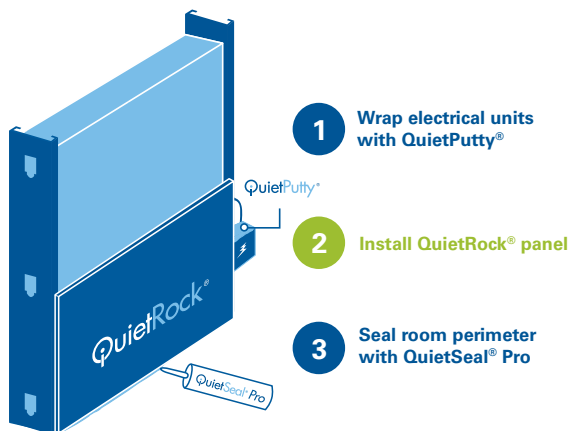
QuietRock® 530



Versatile **IMPACT RESISTANT** Sound Damping Gypsum Panel

QuietRock® 530 is a versatile, high performance sound reducing panel that delivers superb noise reduction and impact resistance. This 'superpanel' is UL fire-rated, STC-rated, shear-rated, impact-resistant, and optionally RF shielded.

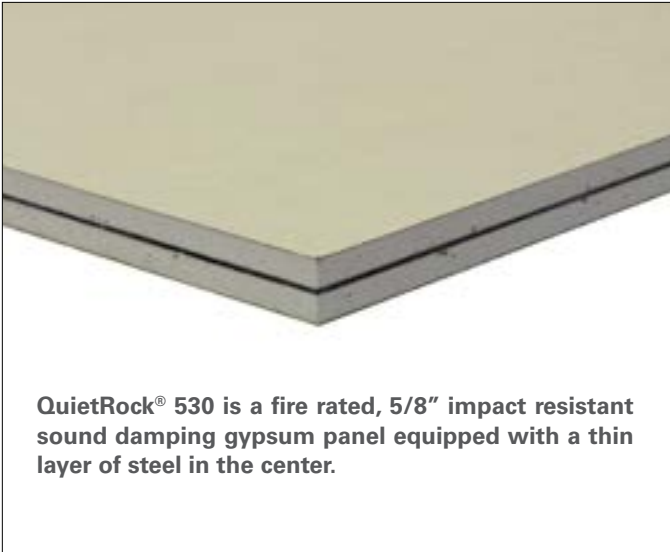
The Quiet® Sound Damping System in 3 easy steps:



QuietRock® 530 Benefits

- Delivers STC ratings of 52-74
- Fire rating equivalent to Type X drywall; UL fire-rated
- Shear-rated (average 487 lbs/ft)
- Hangs and finishes like standard drywall
- QuietRock® 530RF available for RF and noise shielding and tested in accordance with IEEE 2999-1097; Radio Frequency shield testing (standard 530 does not provide RF shielding)
- Continues to reduce noise even when fixtures are installed, such as shelves or lamps
- Can be used in load bearing and non-load bearing assemblies
- Tested in accordance with ASTM E 695-03; impact load testing
- Tested in accordance with article 4, section 27-335.1(2) and article 5, section 27-348E of the building code of the city of New York

QuietRock® 530



QuietRock® 530 is a fire rated, 5/8" impact resistant sound damping gypsum panel equipped with a thin layer of steel in the center.

Product Specifications:

- Thickness:** 5/8" (15.9mm), tapered edges
- Width:** 4' (1220mm)
- Lengths:** 8' (2438mm), 9' (2743mm), 10' (3048mm), 12' (3658mm)
- Weight:** 3.3 lbs/sqft
- STC-rated Assemblies (per ASTM E 90):** 52-74
- Fire-rated (per ASTM E 119):** 1 hour
- Flame Spread (per ASTM E 84):** Class A
- Permeability (per ASTM E 695-03):** 0
- Shear-rated (per ASTM E 2126):** 487 lb/ft
- Installation Standards:** ASTM C 840; GA-214, GA-216

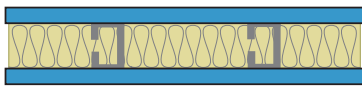
UL Assembly:

Approved for use in many one hour fire-rated assemblies including U309, U340, U341, U376, U386, V310, V463, V464, W313, W317, W459, and W460. Visit www.QuietRock.com for additional information on fire-rated assemblies. QuietRock® 530 can be incorporated in several UL designs. However it is not intended as a direct substitute for a UL Classified Gypsum Board in all fire assemblies. Refer to the specific UL designs for assembly details.

Common Wall Assemblies:

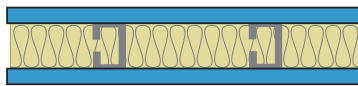
Light Gauge Steel Stud Walls

Single 3 5/8" Steel Stud Wall, 24" OC - **STC 53***



QuietRock® on both sides

Single 3 5/8" Steel Stud Wall, 24" OC - **STC 55**

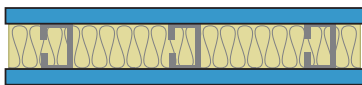


QuietRock® on both sides

Visit www.QuietRock.com for additional assembly and technical information

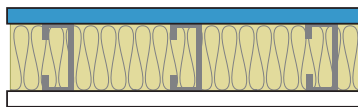
Heavy Gauge Steel Stud Walls

3-5/8" Single Steel Stud Wall, 16" OC - **STC 48***



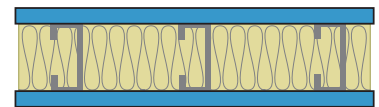
QuietRock® on both sides

6" Single Steel Stud Wall, 16" OC - **STC 49***



QuietRock® on one side
Type X on the other

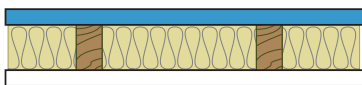
6" Single Steel Stud Wall, 16" OC - **STC 53***



QuietRock® on both sides

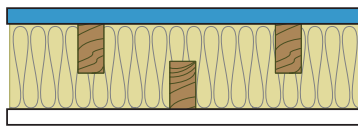
Wood Stud Walls

Single 2x4 wood studs, 24" OC - **STC 52**



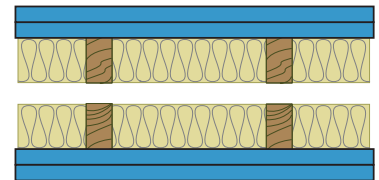
QuietRock® on one side,
Type X on the other

Staggered 2x4 wood studs, 8" OC - **STC 57***



QuietRock® on one side
Type X on the other

Double 2x4 wood studs, 24" OC - **STC 74**



Double layer QuietRock® on both sides

* Estimated STC based on independent laboratory testing

The information contained in this document is for general purposes only. Features and specifications are subject to change. The diagrams and stated STC ratings are intended to serve as a guide. Construction practices have an influence on final STC ratings. Serious Energy cannot guarantee actual STC ratings. Flanking sound patterns, the integrity of the wall, and construction methods factor in effective sound control. Exposure to excessive or continuous moisture and extreme temperatures of 125°F (52°C) or more should be avoided. QuietRock should be stored flat in a dry area, under cover, on supported risers to prevent damage to product. Proper care should be taken while transporting, storing, applying and maintaining QuietRock.