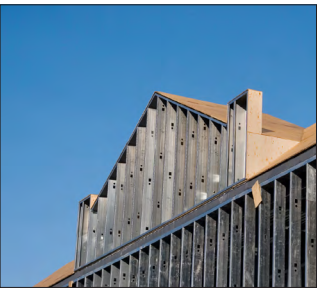


# QuietRock® ES

POWERED BY **EZ-SNAP**

**Mold Resistant**



## The **ONLY** mold resistant sound reducing panel with **EZ-SNAP™** technology

QuietRock® ES Mold Resistant is the first and only easy score and snap, mold resistant sound damping drywall available. Part of the QuietRock® Sound Damping System, QuietRock® ES Mold Resistant delivers reliable acoustic performance at a low installed cost - saving time, labor, materials, and valuable floor space. The mold resistant treatment to the paper and core can contribute to a healthier indoor environment. QuietRock® ES Mold Resistant achieves the maximum score of 10 on the ASTM D 3273 mold test, making it ideal for hospitals, schools, government projects and other mold sensitive applications.

<p><b>EASY</b> to snap</p> <p>Single tapered edge</p> <p>New mold resistant facing</p> <p>New mold resistant core</p> <p>No paper in the center</p> <p>Viscoelastic polymer</p> <p>POWERED BY <b>EZ-SNAP</b></p>	<p><b>HARD</b> to snap</p> <p>Double tapered edge</p> <p>2 Layers of paper in the center</p> <p>Polymer</p> <p><b>Other sound reducing drywall</b></p>
--	--

### QuietRock® ES Mold Resistant Benefits

- Mold resistant per ASTM D 3273
- Ideal for mold-sensitive applications such as hospitals, schools, government, and basements projects
- Powered by EZ-SNAP™ - easier to snap compared to other sound reducing drywall products
- Achieves STC 55 with just one layer on one side of single steel stud construction
- QuietRock® ES is 1 hour fire rated, Type X - listed in more than 90 UL & ULC fire resistant assemblies
- Abrasion resistant paper with mold resistant treatment
- Same high acoustic performance as QuietRock® ES



Mold resistant, Type X, 5/8" sound damping gypsum panel without paper or metal in the core. Cuts and installs similar to standard gypsum panel products. QuietRock® ES Mold Resistant is recommended for mold sensitive applications such as schools, hospitals, and government projects.

## Product Specifications:

- Thickness:** 5/8" (15.9mm), tapered edges
- Width:** 4' (1220mm)
- Lengths:** 8' (2438mm), 9' (2743mm), 10' (3048mm)
- Weight:** 2.6 lbs/sqft
- ASTM Standards:** C 473, E 84, E 90, E 119, D 3273
- STC-rated Assemblies (per ASTM E 90):** 48-60
- Fire-rated (per ASTM E 119, UL263):** 1 hour, Type X
- Flame Spread:** Class A
- Mold Resistance Dating (per ASTM D 3273):** 10
- Installation Standards:** ASTM C 840; GA-214, GA-216

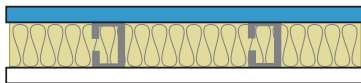
**UL Assembly:**  

Approved for use in many one and two hour fire-rated assemblies including U305, U309, U340, U341, U376, U386, U425, U465, V419, V463, V464, W313, W317, W459, and W460. Go to [www.QuietRock.com](http://www.QuietRock.com) for additional information on fire-rated assemblies. QuietRock® ES Mold Resistant can be incorporated in several one and two-hour fire-rated UL designs. However it is not intended as a direct substitute for a UL Classified Gypsum Board in all fire assemblies. Refer to the specific UL designs for assembly details.

## Common Wall Assemblies:

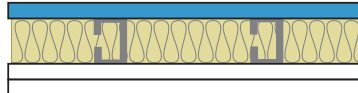
### Light Gauge Steel Stud Walls

Single 3 5/8" Steel Stud Wall, 24" OC - **STC 55**



QuietRock® on one side,  
Type X on the other

Single 3 5/8" Steel Stud Wall, 24" OC - **STC 60**

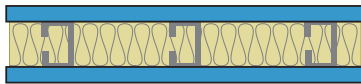


QuietRock® on one side,  
2 layers 5/8" Type X on the other

Visit [www.QuietRock.com](http://www.QuietRock.com) for additional assembly and technical information

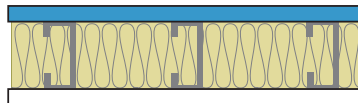
### Heavy Gauge Steel Stud Walls

3-5/8" Single Steel Stud Wall, 16" OC - **STC 48**



QuietRock® on both sides

6" Single Steel Stud Wall, 16" OC - **STC 49**



QuietRock® on one side,  
Type X on the other

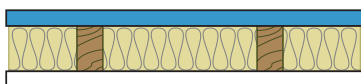
6" Single Steel Stud Wall, 16" OC - **STC 53**



QuietRock® on both sides

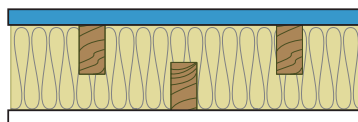
### Wood Stud Walls

Single 2x4 wood studs, 24" OC - **STC 51**



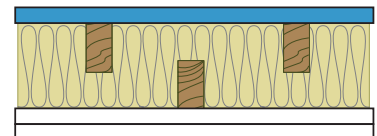
QuietRock® on one side,  
Type X on the other

Staggered 2x4 wood studs, 8" OC - **STC 55**



QuietRock® on one side  
Type X on the other

Staggered 2x4 wood studs, 8" OC - **STC 60**



QuietRock® on one side  
2 layers 5/8" Type X on the other

The information contained in this document is for general purposes only. Features and specifications are subject to change. The diagrams and stated STC ratings are intended to serve as a guide. Construction practices have an influence on final STC ratings. PABCO® Gypsum cannot guarantee actual STC ratings. Flanking sound patterns, the integrity of the wall, and construction methods factor in effective sound control. Exposure to excessive or continuous moisture and extreme temperatures of 125°F (52°C) or more should be avoided. QuietRock® should be stored flat in a dry area, under cover, on supported risers to prevent damage to product. Proper care should be taken while transporting, storing, applying and maintaining QuietRock.